

TRI-SURE® FLANGE INSERTION DIES

Tri-Sure flange insertion

The Tri-Sure® standard insertion method of steel flanges, consists of two separate operations. The first operation provides the drum with a cylindrical collar and an octagonal embossing. In the second operation the Tri-Sure® flange is curled over, the in the 1st op. produced, collar.

Standard insertion dies

Tri-Sure supplies pillar guided insertion dies, for both the first and second operation. These dies can be supplied to customer requirements.

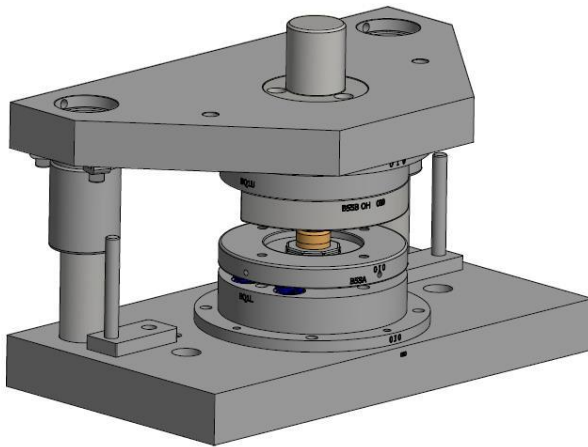
Below pictures show a 1st and a 2nd operation die for combined G2 & G3/4 Tri-Sure® steel flanges insertion into steel drum tops. In basic form, the infeed of flanges is manually into the die.



On request the die housing can be made to suit a particular layout of an ends line or specific press. The drum top pitch (distance between closures) must be accurate and is therefore often a fixed position. By mounting the die parts on “quick exchange rings”, Tri-Sure combines precision with flexibility. The exchange rings are mounted, with tight fit, into the die housing. They can easily be taken out for e.g. maintenance, minimizing operational downtime of the equipment (see below). Often it is possible to have more than one fixed pitch position in a die, or to have variable pitch die.



Tri-Sure can supply pillar guided dies, for one size or multiple insertions of G2 and/or G3/4 closures.



Example above: Single G3/4, 1st operation Tri-Sure®, die.

Insertion dies for body insertion

Depending on actual position of the insertion and the drum diameter (mainly pails) Tri-Sure can also supply dies for insertion of a flange into a drum body. A G3/4 steel flange can e.g. be used to fit a plastic tap, for easy drainage of the drum. Note: Depending on the drum configuration a special press may be needed for body-insertion.

Automatic flange insertion

In many steel drum manufacturing plants, automatic flange insertion lines are used. Tri-Sure does not supply automatic insertion equipment, but can cooperate with manufacturers of these type of lines, by supplying Tri-Sure insertion dies parts.



Eg. automatic flange insertion line with applied Tri-Sure die.